

2838 Park Ave, Soquel, CA

SEARCH RESULTS (232)

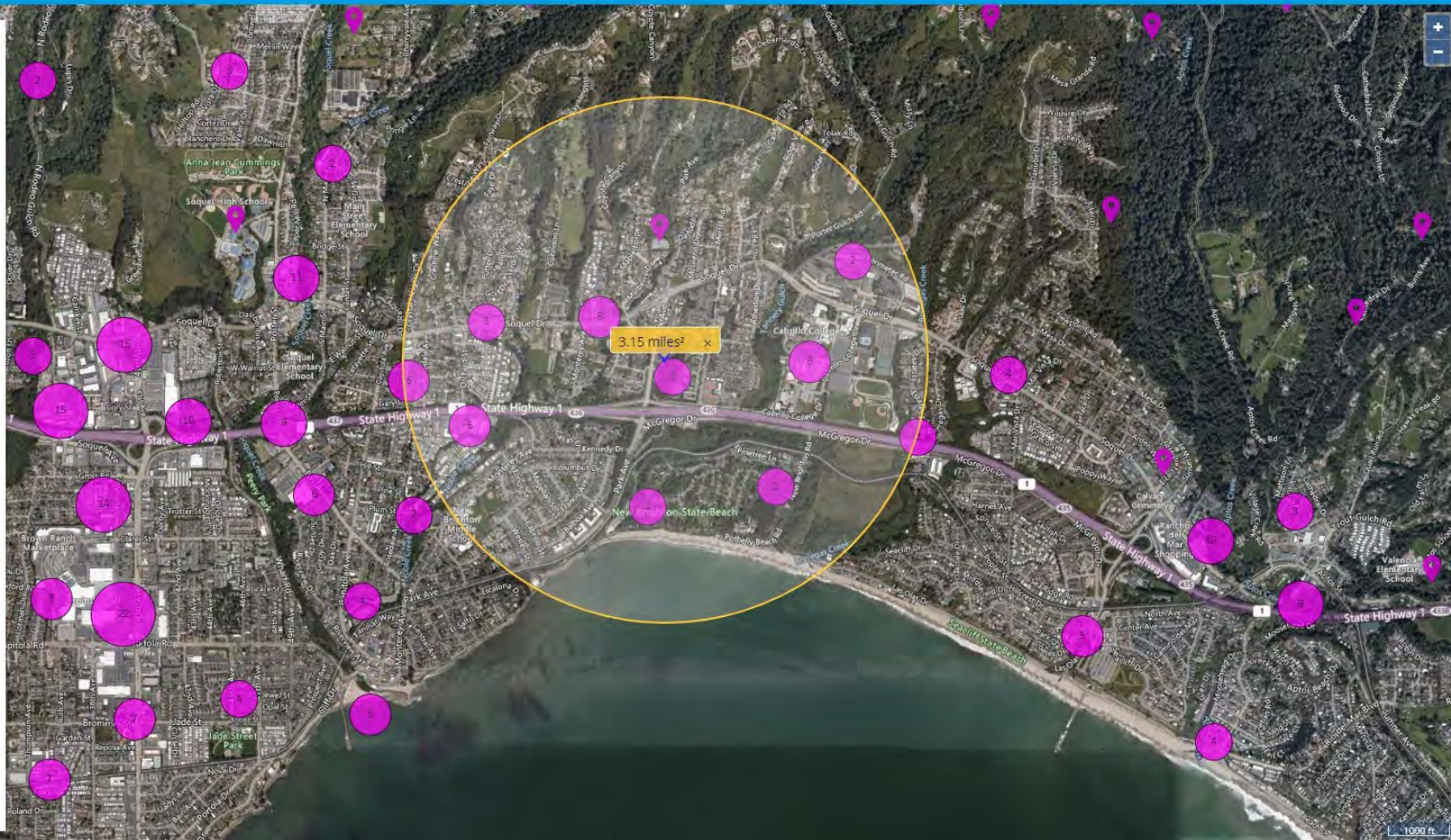
Measure Tool

Select the line, circle, or polygon tool below and then click the map to measure your first point - double-click to complete the measurement.

LINE CIRCLE POLYGON

miles²

CLEAR MEASUREMENTS



[Home \(/\)](#) > [Programs \(/programs/\)](#) > [Environmental Review \(/programs/environmental-review/\)](#) > ASD Calculator

Acceptable Separation Distance (ASD) Electronic Assessment Tool

The Environmental Planning Division (EPD) has developed an electronic-based assessment tool that calculates the Acceptable Separation Distance (ASD) from stationary hazards. The ASD is the distance from above ground stationary containerized hazards of an explosive or fire prone nature, to where a HUD assisted project can be located. The ASD is consistent with the Department's standards of blast overpressure (0.5 psi-buildings) and thermal radiation (450 BTU/ft² - hr - people and 10,000 BTU/ft² - hr - buildings). Calculation of the ASD is the first step to assess site suitability for proposed HUD-assisted projects near stationary hazards. Additional guidance on ASDs is available in the Department's guidebook "Siting of HUD- Assisted Projects Near Hazardous Facilities" and the regulation 24 CFR Part 51, Subpart C, Siting of HUD-Assisted Projects Near Hazardous Operations Handling Conventional Fuels or Chemicals of an Explosive or Flammable Nature.

Note: Tool tips, containing field specific information, have been added in this tool and may be accessed by hovering over the ASD result fields with the mouse.

Acceptable Separation Distance Assessment Tool

Is the container above ground?	Yes: <input checked="" type="checkbox"/> No: <input type="checkbox"/>
Is the container under pressure?	Yes: <input type="checkbox"/> No: <input checked="" type="checkbox"/>
Does the container hold a cryogenic liquified gas?	Yes: <input type="checkbox"/> No: <input type="checkbox"/>
Is the container diked?	Yes: <input type="checkbox"/> No: <input checked="" type="checkbox"/>
What is the volume (gal) of the container?	<input type="text" value="599"/>
What is the Diked Area Length (ft)?	<input type="text"/>
What is the Diked Area Width (ft)?	<input type="text"/>
<input type="button" value="Calculate Acceptable Separation Distance"/>	
Diked Area (sqft)	<input type="text"/>
ASD for Blast Over Pressure (ASDBOP)	<input type="text"/>

ASD for Thermal Radiation for People (ASDPPU)	223.40
ASD for Thermal Radiation for Buildings (ASDBPU)	39.67
ASD for Thermal Radiation for People (ASDPNPD)	
ASD for Thermal Radiation for Buildings (ASDBNPD)	

For mitigation options, please click on the following link: Mitigation Options
(</resource/3846/acceptable-separation-distance-asd-hazard-mitigation-options/>)

Providing Feedback & Corrections

After using the ASD Assessment Tool following the directions in this User Guide, users are encouraged to provide feedback on how the ASD Assessment Tool may be improved. Users are also encouraged to send comments or corrections for the improvement of the tool.

Please send comments or other input using the **Contact Us**
(<https://www.hudexchange.info/contact-us/>) form.

Related Information

- ASD User Guide (</resource/3839/acceptable-separation-distance-asd-assessment-tool-user-guide/>)
- ASD Flow Chart (</resource/3840/acceptable-separation-distance-asd-flowchart/>)

[Home \(/\)](#) > [Programs \(/programs/\)](#) > [Environmental Review \(/programs/environmental-review/\)](#) > ASD Calculator

Acceptable Separation Distance (ASD) Electronic Assessment Tool

The Environmental Planning Division (EPD) has developed an electronic-based assessment tool that calculates the Acceptable Separation Distance (ASD) from stationary hazards. The ASD is the distance from above ground stationary containerized hazards of an explosive or fire prone nature, to where a HUD assisted project can be located. The ASD is consistent with the Department's standards of blast overpressure (0.5 psi-buildings) and thermal radiation (450 BTU/ft² - hr - people and 10,000 BTU/ft² - hr - buildings). Calculation of the ASD is the first step to assess site suitability for proposed HUD-assisted projects near stationary hazards. Additional guidance on ASDs is available in the Department's guidebook "Siting of HUD- Assisted Projects Near Hazardous Facilities" and the regulation 24 CFR Part 51, Subpart C, Siting of HUD-Assisted Projects Near Hazardous Operations Handling Conventional Fuels or Chemicals of an Explosive or Flammable Nature.

Note: Tool tips, containing field specific information, have been added in this tool and may be accessed by hovering over the ASD result fields with the mouse.

Acceptable Separation Distance Assessment Tool

Is the container above ground?	Yes: <input checked="" type="checkbox"/> No: <input type="checkbox"/>
Is the container under pressure?	Yes: <input type="checkbox"/> No: <input checked="" type="checkbox"/>
Does the container hold a cryogenic liquified gas?	Yes: <input type="checkbox"/> No: <input type="checkbox"/>
Is the container diked?	Yes: <input type="checkbox"/> No: <input checked="" type="checkbox"/>
What is the volume (gal) of the container?	<input type="text" value="1199"/>
What is the Diked Area Length (ft)?	<input type="text"/>
What is the Diked Area Width (ft)?	<input type="text"/>
<input type="button" value="Calculate Acceptable Separation Distance"/>	
Diked Area (sqft)	<input type="text"/>
ASD for Blast Over Pressure (ASDBOP)	<input type="text"/>

ASD for Thermal Radiation for People (ASDPPU)	298.29
ASD for Thermal Radiation for Buildings (ASDBPU)	54.68
ASD for Thermal Radiation for People (ASDPNPD)	
ASD for Thermal Radiation for Buildings (ASDBNPD)	

For mitigation options, please click on the following link: Mitigation Options
(</resource/3846/acceptable-separation-distance-asd-hazard-mitigation-options/>)

Providing Feedback & Corrections

After using the ASD Assessment Tool following the directions in this User Guide, users are encouraged to provide feedback on how the ASD Assessment Tool may be improved. Users are also encouraged to send comments or corrections for the improvement of the tool.

Please send comments or other input using the **Contact Us**
(<https://www.hudexchange.info/contact-us/>) form.

Related Information

- ASD User Guide (</resource/3839/acceptable-separation-distance-asd-assessment-tool-user-guide/>)
- ASD Flow Chart (</resource/3840/acceptable-separation-distance-asd-flowchart/>)

[Home \(/\)](#) > [Programs \(/programs/\)](#) > [Environmental Review \(/programs/environmental-review/\)](#) > ASD Calculator

Acceptable Separation Distance (ASD) Electronic Assessment Tool

The Environmental Planning Division (EPD) has developed an electronic-based assessment tool that calculates the Acceptable Separation Distance (ASD) from stationary hazards. The ASD is the distance from above ground stationary containerized hazards of an explosive or fire prone nature, to where a HUD assisted project can be located. The ASD is consistent with the Department's standards of blast overpressure (0.5 psi-buildings) and thermal radiation (450 BTU/ft² - hr - people and 10,000 BTU/ft² - hr - buildings). Calculation of the ASD is the first step to assess site suitability for proposed HUD-assisted projects near stationary hazards. Additional guidance on ASDs is available in the Department's guidebook "Siting of HUD- Assisted Projects Near Hazardous Facilities" and the regulation 24 CFR Part 51, Subpart C, Siting of HUD-Assisted Projects Near Hazardous Operations Handling Conventional Fuels or Chemicals of an Explosive or Flammable Nature.

Note: Tool tips, containing field specific information, have been added in this tool and may be accessed by hovering over the ASD result fields with the mouse.

Acceptable Separation Distance Assessment Tool

Is the container above ground?	Yes: <input checked="" type="checkbox"/> No: <input type="checkbox"/>
Is the container under pressure?	Yes: <input type="checkbox"/> No: <input checked="" type="checkbox"/>
Does the container hold a cryogenic liquified gas?	Yes: <input type="checkbox"/> No: <input type="checkbox"/>
Is the container diked?	Yes: <input type="checkbox"/> No: <input checked="" type="checkbox"/>
What is the volume (gal) of the container?	<input type="text" value="19442"/>
What is the Diked Area Length (ft)?	<input type="text"/>
What is the Diked Area Width (ft)?	<input type="text"/>
<input type="button" value="Calculate Acceptable Separation Distance"/>	
Diked Area (sqft)	<input type="text"/>
ASD for Blast Over Pressure (ASDBOP)	<input type="text"/>

ASD for Thermal Radiation for People (ASDPPU)	952.12
ASD for Thermal Radiation for Buildings (ASDBPU)	198.24
ASD for Thermal Radiation for People (ASDPNPD)	
ASD for Thermal Radiation for Buildings (ASDBNPD)	

For mitigation options, please click on the following link: Mitigation Options
(</resource/3846/acceptable-separation-distance-asd-hazard-mitigation-options/>)

Providing Feedback & Corrections

After using the ASD Assessment Tool following the directions in this User Guide, users are encouraged to provide feedback on how the ASD Assessment Tool may be improved. Users are also encouraged to send comments or corrections for the improvement of the tool.

Please send comments or other input using the **Contact Us**
(<https://www.hudexchange.info/contact-us/>) form.

Related Information

- ASD User Guide (</resource/3839/acceptable-separation-distance-asd-assessment-tool-user-guide/>)
- ASD Flow Chart (</resource/3840/acceptable-separation-distance-asd-flowchart/>)

[Home \(/\)](#) > [Programs \(/programs/\)](#) > [Environmental Review \(/programs/environmental-review/\)](#) > ASD Calculator

Acceptable Separation Distance (ASD) Electronic Assessment Tool

The Environmental Planning Division (EPD) has developed an electronic-based assessment tool that calculates the Acceptable Separation Distance (ASD) from stationary hazards. The ASD is the distance from above ground stationary containerized hazards of an explosive or fire prone nature, to where a HUD assisted project can be located. The ASD is consistent with the Department's standards of blast overpressure (0.5 psi-buildings) and thermal radiation (450 BTU/ft² - hr - people and 10,000 BTU/ft² - hr - buildings). Calculation of the ASD is the first step to assess site suitability for proposed HUD-assisted projects near stationary hazards. Additional guidance on ASDs is available in the Department's guidebook "Siting of HUD- Assisted Projects Near Hazardous Facilities" and the regulation 24 CFR Part 51, Subpart C, Siting of HUD-Assisted Projects Near Hazardous Operations Handling Conventional Fuels or Chemicals of an Explosive or Flammable Nature.

Note: Tool tips, containing field specific information, have been added in this tool and may be accessed by hovering over the ASD result fields with the mouse.

Acceptable Separation Distance Assessment Tool

Is the container above ground?	Yes: <input checked="" type="checkbox"/> No: <input type="checkbox"/>
Is the container under pressure?	Yes: <input type="checkbox"/> No: <input checked="" type="checkbox"/>
Does the container hold a cryogenic liquified gas?	Yes: <input type="checkbox"/> No: <input type="checkbox"/>
Is the container diked?	Yes: <input type="checkbox"/> No: <input checked="" type="checkbox"/>
What is the volume (gal) of the container?	<input type="text" value="2999"/>
What is the Diked Area Length (ft)?	<input type="text"/>
What is the Diked Area Width (ft)?	<input type="text"/>
<input type="button" value="Calculate Acceptable Separation Distance"/>	
Diked Area (sqft)	<input type="text"/>
ASD for Blast Over Pressure (ASDBOP)	<input type="text"/>

ASD for Thermal Radiation for People (ASDPPU)	437.03
ASD for Thermal Radiation for Buildings (ASDBPU)	83.54
ASD for Thermal Radiation for People (ASDPNPD)	
ASD for Thermal Radiation for Buildings (ASDBNPD)	

For mitigation options, please click on the following link: Mitigation Options
(</resource/3846/acceptable-separation-distance-asd-hazard-mitigation-options/>)

Providing Feedback & Corrections

After using the ASD Assessment Tool following the directions in this User Guide, users are encouraged to provide feedback on how the ASD Assessment Tool may be improved. Users are also encouraged to send comments or corrections for the improvement of the tool.

Please send comments or other input using the **Contact Us**
(<https://www.hudexchange.info/contact-us/>) form.

Related Information

- ASD User Guide (</resource/3839/acceptable-separation-distance-asd-assessment-tool-user-guide/>)
- ASD Flow Chart (</resource/3840/acceptable-separation-distance-asd-flowchart/>)

A J'S FUEL & FOODMART INC
 5955 SOQUEL DR
 SOQUEL CA 95073

[SHOW MORE INFORMATION >](#)



Regulatory Programs

- Chemical Storage Facilities
- US EPA Air Emission Inventory System (EIS)
- Underground Storage Tank

Evaluations

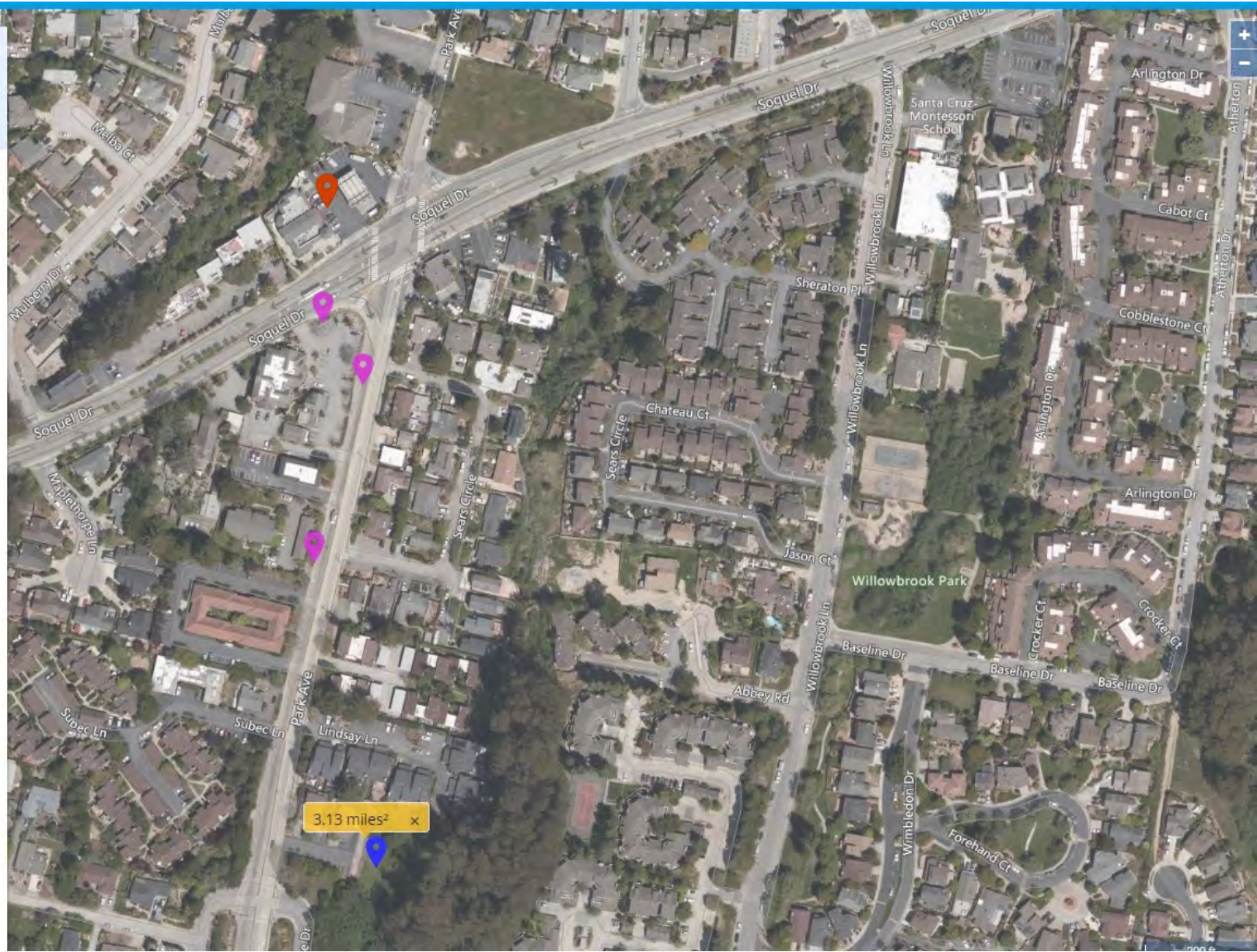
Evaluations With Violations	11
Evaluations Without Violations	9

Violations

Total	18
-------	----

Compliance

Total	9
-------	---



3.13 miles² x



A J'S FUEL & FOODMART INC
5955 SOQUEL DR
SOQUEL CA 95073



2838 Park Ave, Soquel, CA 95073

PROFILE MAP REGULATORY PROGRAMS COMPLIANCE **CHEMICALS**

[SHOW LESS INFORMATION](#)

15 sites found

Did you mean: 2838 Park Ave, Soquel, CA 95073

McGregor Property
1560 MCGREGOR DRIVE
CAPITOLA CA 95010

SCWD - ESTATES WELL
2619 ESTATES DR
APTOS CA 95003

Twin Lakes Church Seawater Intrusion
Prevention/Recharge Pilot Well
2701 CABRILLO COLLEGE
APTOS CA 95003

TWIN LAKES BAPTIST CHURCH INC
2701 CABRILLO COLLEGE DR
APTOS CA 95003

APTOS/LA SELVA FIRE PROT DIST
6934 SOQUEL DR
APTOS CA 95003

BAY PHOTO INC MAIN LAB
2853 PARK AVE

Chemical Storage

REPORTING PERIOD: 2021
SUBMITTED ON: 05/21/2021

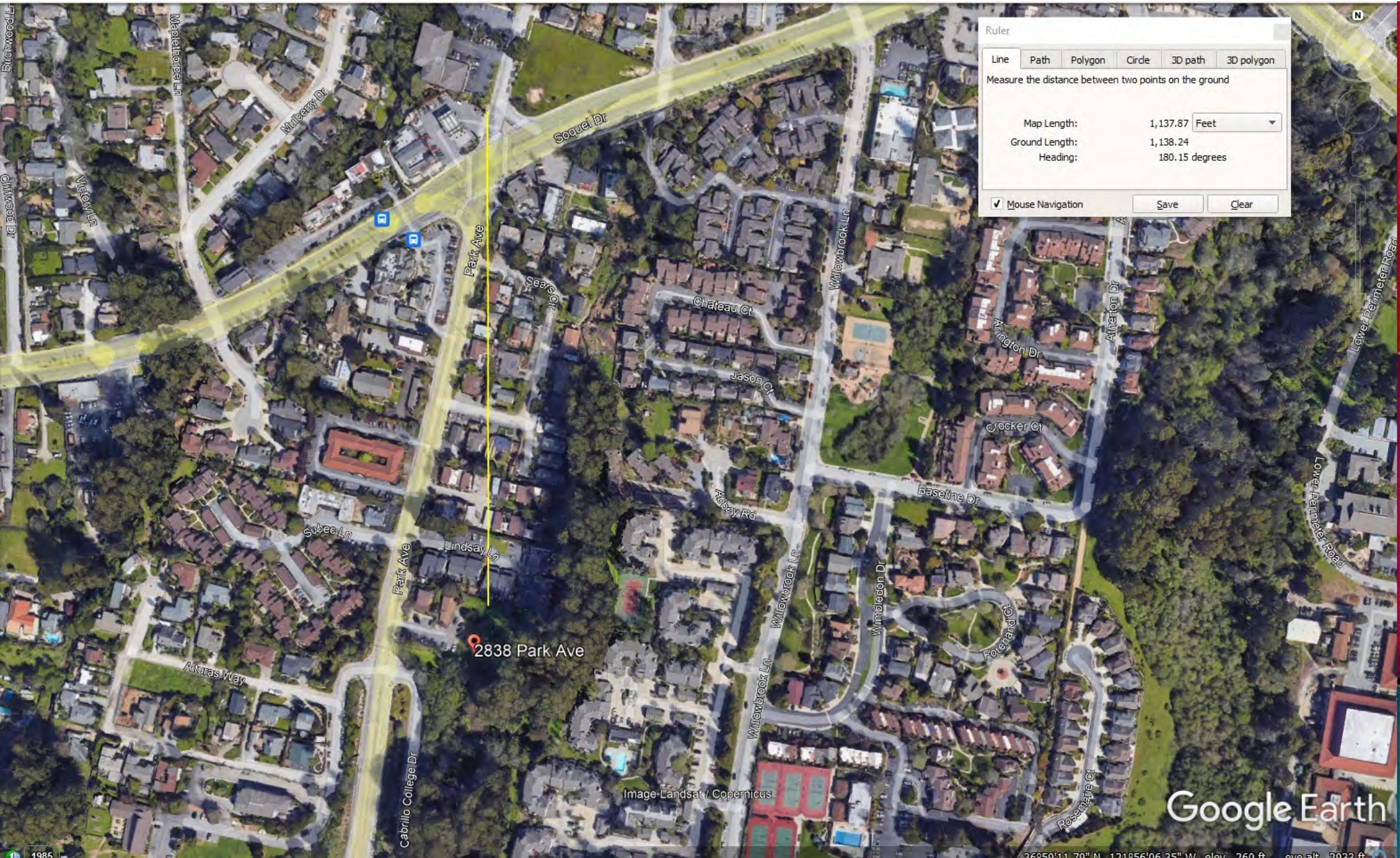
Chemicals

Name	Max Daily Amount / Unit	Avg Daily Amount / Unit	Days Onsite	Physical State(S)	
+					
+	RNX AHS Online Protectant	0-11 Gallons	0-11 Gallons	365	Liquid, Mix
+	REGULAR UNLEADED GASOLINE	9000-11999 Gallons	3000-5999 Gallons	365	Liquid, Mix
+	PROPANE	13000-25999 Cubic Feet	2600-12999 Cubic Feet	365	Gas, Pure
+	PREMIUM UNLEADED GASOLINE	9000-11999 Gallons	3000-5999 Gallons	365	Liquid, Mix
+	LOW PH Presoak	60-119 Gallons	12-59 Gallons	365	Liquid, Mix

5 rows

Page: 1 of 3

1 - 5 of 13



Ruler

Line Path Polygon Circle 3D path 3D polygon

Measure the distance between two points on the ground

Map Length: 1,137.87 Feet

Ground Length: 1,138.24

Heading: 180.15 degrees

Mouse Navigation

2838 Park Ave

Image Landsat / Copernicus

Google Earth



Image Landsat / Copernicus

Google Earth

1985

36°50'71.73" N 121°56'08.62" W elev. 150 ft eye alt. 424 ft

2838 Park Ave, Soquel, CA 95073
✕

5 sites found

Did you mean: 📍 2838 Park Ave, Soquel, CA 95073 ✕

AT&T Mobility - CABRILLO COLLEGE (CN3767) (USID102503)
 6500 SOQUEL DR
 APTOS CA 95003

T-Mobile West, LLC SF05739A
 6500 SOQUEL DR
 APTOS CA 95003


SPRINT CELL SITE FS22XC013
 6500 SOQUEL DR
 APTOS CA 95003

Verizon Wireless Aptos
 6500 SOQUEL DR
 APTOS CA 95003

CABRILLO COLLEGE
 6500 SOQUEL DR
 APTOS CA 95003

CABRILLO COLLEGE
6500 SOQUEL DR
APTOS CA 95003
✕

[SHOW MORE INFORMATION >](#)



Regulatory Programs

- Chemical Storage Facilities
- Hazardous Waste Generator
- US EPA Air Emission Inventory System (EIS)
- Underground Storage Tank

Evaluations

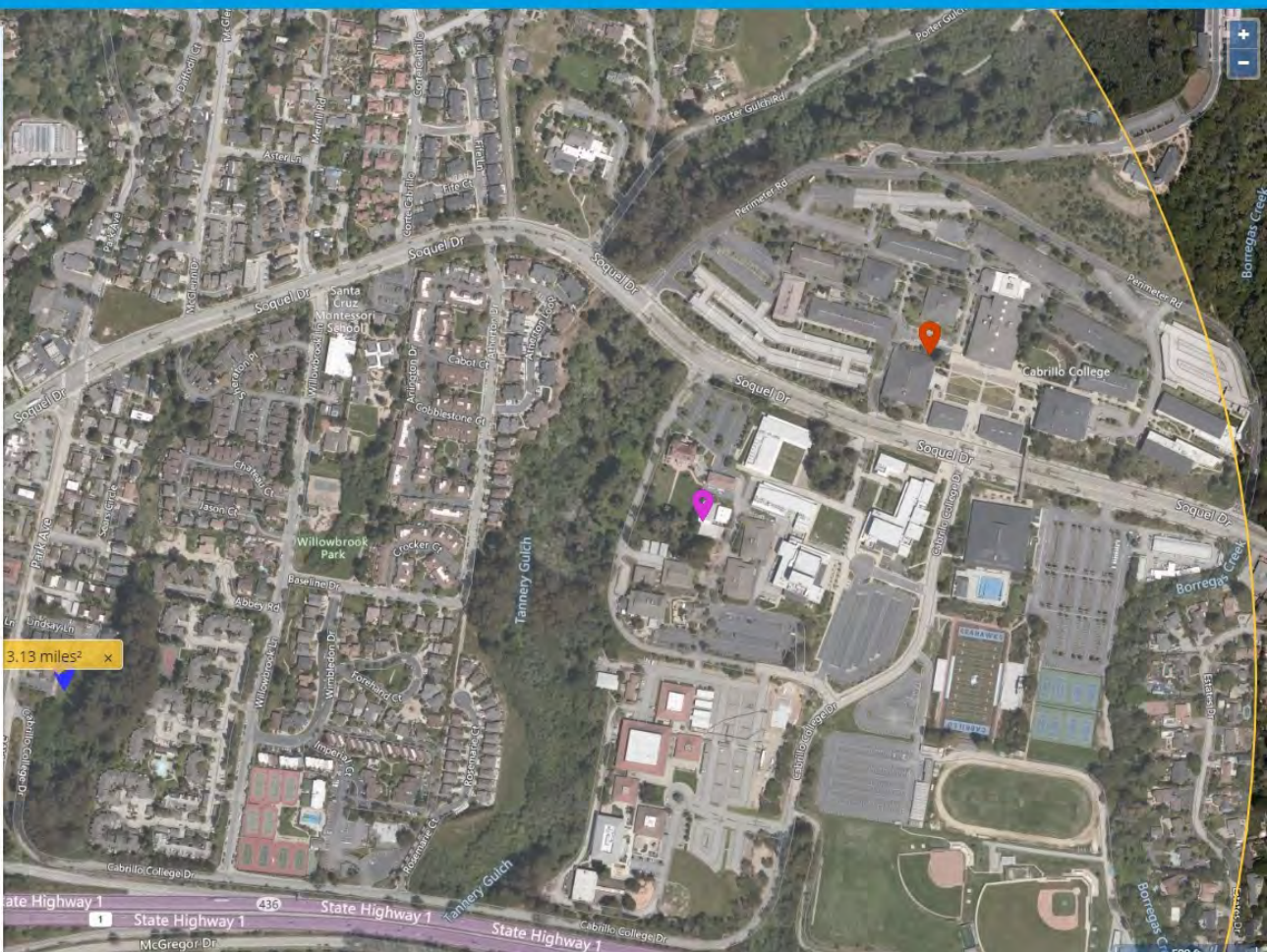
Evaluations With Violations	10
Evaluations Without Violations	7

Violations

Total	17
-------	----

Compliance

Total	7
-------	---





Ruler

Line Path Polygon Circle 3D path 3D polygon

Measure the distance between two points on the ground

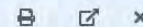
Map Length: 1,875.48 Feet

Ground Length: 1,875.84

Heading: 83.33 degrees

Mouse Navigation Save Clear

CABRILLO COLLEGE
6500 SOQUEL DR
APTOS CA 95003



2838 Park Ave, Soquel, CA 95073

PROFILE MAP REGULATORY PROGRAMS COMPLIANCE **CHEMICALS**

< SHOW LESS INFORMATION

36 sites found

Did you mean: 2838 Park Ave, Soquel, CA 95073

Rite Aid #5965
80 RANCHO DEL MAR
APTOS CA 95003

SCWD - T HOPKINS WELL
201 APTOS CREEK RD
APTOS CA 95003

APTOS INLAND
3200 APTOS RANCHO RD
APTOS CA 95003

SAFEWAY FUEL CENTER #640-12
18 RANCHO DEL MAR
APTOS CA 95003

SHELL STATION
18 RANCHO DEL MAR
APTOS CA 95003

AT&T California - NF1BV
MAR VISTA SCHOOL
APTOS CA 95003

Chemical Storage

REPORTING PERIOD: 2021 SUBMITTED ON: 01/13/2021

Chemicals

Name	Max Daily Amount / Unit	Avg Daily Amount / Unit	Days Onsite	Physical State(S)	
+					
+	DIESEL FUEL	120-599 Gallons	60-119 Gallons	365	Liquid, Mix
+	DIESEL FUEL	600-1199 Gallons	600-1199 Gallons	365	Liquid, Mix
+	COMPRESSED GAS N.O.S.	2600-12999 Cubic Feet	2600-12999 Cubic Feet	365	Gas, Mix
+	ARGON COMPRESSED GAS	0-2599 Cubic Feet	0-2599 Cubic Feet	365	Gas, Pure
+	AGRO THRIVE LFK	120-599 Gallons	120-599 Gallons	365	Liquid, Mix

5 rows

Page: 5 of 6

21 - 25 of 29



2838 Park Ave, Soquel, CA 95073

36 sites found

Did you mean: 2838 Park Ave, Soquel, CA 95073

Rite Aid #5965
80 RANCHO DEL MAR
APTOS CA 95003

SCWD - T HOPKINS WELL
201 APTOS CREEK RD
APTOS CA 95003

APTOS INLAND
3200 APTOS RANCHO RD
APTOS CA 95003

SAFEWAY FUEL CENTER #640-12
18 RANCHO DEL MAR
APTOS CA 95003

SHELL STATION
18 RANCHO DEL MAR
APTOS CA 95003

AT&T California - NF1BV
MAR VISTA SCHOOL
APTOS CA 95003

CABRILLO COLLEGE
6500 SOQUEL DR
APTOS CA 95003

PROFILE MAP REGULATORY PROGRAMS COMPLIANCE **CHEMICALS**

< SHOW LESS INFORMATION

Chemical Storage

REPORTING PERIOD 2021
SUBMITTED ON 01/13/2021

Chemicals

Name	Max Daily Amount / Unit	Avg Daily Amount / Unit	Days Onsite	Physical State(S)	
+					
+	ACETYLENE	0-2599 Cubic Feet	0-2599 Cubic Feet	365	Gas, Pure
+	85 HPX HIGH PERFORMANCE GARNET ABRASIVES	1000-4999 Pounds	500-999 Pounds	365	Solid, Mix
+	7.5-5-7.5	500-999 Pounds	100-499 Pounds	365	Solid, Mix
+	#2 DIESEL FUEL	12-59 Gallons	12-59 Gallons	365	Liquid, Pure

5 rows

Page: 6 of 6

26 - 29 of 29

2838 Park Ave, Soquel, CA 95073

- 36 sites found
- Did you mean: 2838 Park Ave, Soquel, CA 95073
- Rite Aid #5965
80 RANCHO DEL MAR
APTOS CA 95003
 - SCWD - T HOPKINS WELL
201 APTOS CREEK RD
APTOS CA 95003
 - APTOS INLAND
3200 APTOS RANCHO RD
APTOS CA 95003
 - SAFEWAY FUEL CENTER #640-12
18 RANCHO DEL MAR
APTOS CA 95003
 - SHELL STATION
18 RANCHO DEL MAR
APTOS CA 95003
 - AT&T California - NF1BV
MAR VISTA SCHOOL
APTOS CA 95003

CABRILLO COLLEGE
6500 SOQUEL DR
APTOS CA 95003

PROFILE MAP REGULATORY PROGRAMS COMPLIANCE **CHEMICALS**

< SHOW LESS INFORMATION

Chemical Storage

REPORTING PERIOD: 2021
SUBMITTED ON: 01/13/2021

Chemicals

Name	Max Daily Amount / Unit	Avg Daily Amount / Unit	Days Onsite	Physical State(S)
KEROSENE	12-59 Gallons	12-59 Gallons	365	Liquid, Pure
Hydrochloric Acid	120-599 Gallons	120-599 Gallons	365	Liquid, Mix
HELIUM	0-2599 Cubic Feet	0-2599 Cubic Feet	365	Gas, Pure
GASOLINE	1200-2999 Gallons	600-1199 Gallons	365	Liquid, Mix
EXCALIBUR 7018 MR	500-999 Pounds	100-499 Pounds	365	Solid, Mix

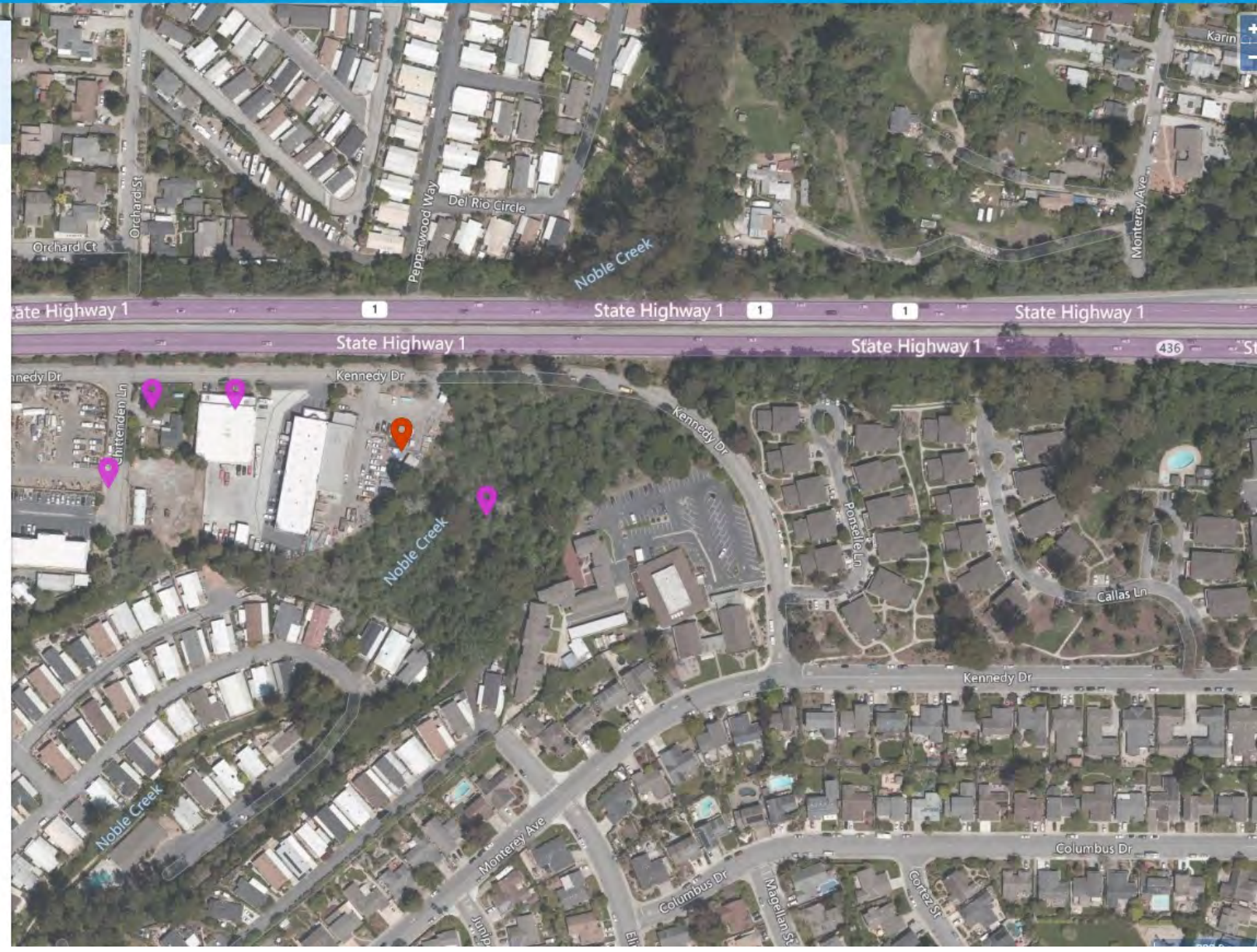
5 rows

Page: 4 of 6

16 - 20 of 29

CITY OF CAPITOLA CORPORATION YARD
 430 KENNEDY DR
 CAPITOLA CA 95010

[SHOW MORE INFORMATION >](#)



Regulatory Programs
 Aboveground Petroleum Storage
 Chemical Storage Facilities
 Hazardous Waste Generator

Evaluations

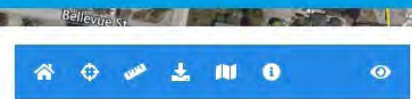
Evaluations With Violations	1
Evaluations Without Violations	11

Violations

Total	1
-------	---

Compliance

Total	1
-------	---



2838 Park Ave, Soquel, CA 95073

10 sites found

Did you mean: 2838 Park Ave, Soquel, CA 95073

CAPITOLA CORPORATION YARD
430 KENNEDY DR
CAPITOLA CA 95010

Alpha Machine Company
933 CHITTENDEN LN STE A
CAPITOLA CA 95010

Arctic Glacier
310 KENNEDY ST
CAPITOLA CA 95010

CITY OF CAPITOLA CORPORATION YARD
430 KENNEDY DR
CAPITOLA CA 95010

Sante Adairius LLC
103 KENNEDY DR
CAPITOLA CA 95010

AT&T Mobility - HWY 1 - DUCATTI MOTORS (USID24222)
200 KENNEDY DR
CAPITOLA CA 95010

CITY OF CAPITOLA CORPORATION YARD
430 KENNEDY DR
CAPITOLA CA 95010

PROFILE MAP REGULATORY PROGRAMS COMPLIANCE **CHEMICALS**

< SHOW LESS INFORMATION

Chemical Storage

REPORTING PERIOD: 2019
SUBMITTED ON: 10/23/2019

Chemicals

Name	Max Daily Amount / Unit	Avg Daily Amount / Unit	Days Onsite	Physical State(S)	
+					
+	HYDRAULIC FLUID	12-59 Gallons	12-59 Gallons	365	Liquid, Pure
+	GASOLINE	1200-2999 Gallons	1200-2999 Gallons	365	Liquid, Mix
+	DIESEL FUEL	600-1199 Gallons	600-1199 Gallons	365	Liquid, Mix
+	DEXTRON II	12-59 Gallons	12-59 Gallons	365	Liquid, Mix
+	ACETYLENE	0-2599 Cubic Feet	0-2599 Cubic Feet	365	Gas, Pure

5 rows

Page: 2 of 2

6 - 10 of 10



Ruler

Line Path Polygon Circle 3D path 3D polygon

Measure the distance between two points on the ground

Map Length: 3,000.42 Feet

Ground Length: 3,000.53

Heading: 251.67 degrees

Mouse Navigation Save Clear

Google Earth

2838 Park Ave, Soquel, CA 95073

10 sites found

Did you mean: 2838 Park Ave, Soquel, CA 95073

CAPITOLA CORPORATION YARD
 430 KENNEDY DR
 CAPITOLA CA 95010

Alpha Machine Company
 933 CHITTENDEN LN STE A
 CAPITOLA CA 95010

Arctic Glacier
 310 KENNEDY ST
 CAPITOLA CA 95010

CITY OF CAPITOLA CORPORATION YARD
 430 KENNEDY DR
 CAPITOLA CA 95010

Sante Adairius LLC
 103 KENNEDY DR
 CAPITOLA CA 95010

AT&T Mobility - HWY 1 - DUCATTI MOTORS (USID24222)
 200 KENNEDY DR
 CAPITOLA CA 95010

CITY OF CAPITOLA CORPORATION YARD
 430 KENNEDY DR
 CAPITOLA CA 95010

- PROFILE
- MAP
- REGULATORY PROGRAMS
- COMPLIANCE
- CHEMICALS**

< SHOW LESS INFORMATION

Chemical Storage

REPORTING PERIOD: 2019
 SUBMITTED ON: 10/23/2019

Chemicals

Name	Max Daily Amount / Unit	Avg Daily Amount / Unit	Days Onsite	Physical State(S)
USED OIL	120-599 Gallons	12-59 Gallons	365	Liquid
USED ETHYLENE GLYCOL	12-59 Gallons	12-59 Gallons	365	Liquid
PAINT	60-119 Gallons	60-119 Gallons	365	Liquid, Mix
Oxygen	0-2599 Cubic Feet	0-2599 Cubic Feet	0	Gas, Pure
MOTOR OIL	12-59 Gallons	12-59 Gallons	365	Liquid, Pure

5 rows



Ruler

Line Path Polygon Circle 3D path 3D polygon

Measure the distance between two points on the ground

Map Length: 3,124.49 Feet

Ground Length: 3,124.57

Heading: 253.35 degrees

Mouse Navigation

Save Clear

410 Kennedy Dr

Google Earth

36°58'56.88" N 121°56'06.50" W elev. 88 ft eye alt. 3383 ft

2838 Park Ave, Soquel, CA 95073

10 sites found

Did you mean: 2838 Park Ave, Soquel, CA 95073

CAPITOLA CORPORATION YARD
430 KENNEDY DR
CAPITOLA CA 95010

Alpha Machine Company
933 CHITTENDEN LN STE A
CAPITOLA CA 95010

Arctic Glacier
310 KENNEDY ST
CAPITOLA CA 95010

CITY OF CAPITOLA CORPORATION YARD
430 KENNEDY DR
CAPITOLA CA 95010

Sante Adairius LLC
103 KENNEDY DR
CAPITOLA CA 95010

AT&T Mobility - HWY 1 - DUCATTI MOTORS (USID24222)
200 KENNEDY DR
CAPITOLA CA 95010

CENTRAL FIRE PROTECTION DISTRICT-KENNEDY
410 KENNEDY DR
CAPITOLA CA 95010

PROFILE MAP REGULATORY PROGRAMS COMPLIANCE **CHEMICALS**

< SHOW LESS INFORMATION

Chemical Storage

REPORTING PERIOD: 2020
SUBMITTED ON: 12/07/2020

Chemicals

Name	Max Daily Amount / Unit	Avg Daily Amount / Unit	Days Onsite	Physical State(S)	
+					
+	HYDRAULIC OIL	12-59 Gallons	12-59 Gallons	365	Liquid, Mix
+	Diesel Fuel No. 2	0-11 Gallons	0-11 Gallons	365	Liquid, Pure
+	CLASS A FOAM	120-599 Gallons	60-119 Gallons	365	Liquid, Mix
+	AUTOMATIC TRANSMISSION OIL	60-119 Gallons	12-59 Gallons	365	Liquid, Mix
+	ACETYLENE	0-2599 Cubic Feet	0-2599 Cubic Feet	365	Gas, Pure

5 rows



Home, Search, Print, Download, List, Info, Close icons

2838 Park Ave, Soquel, CA 95073

10 sites found

Did you mean: 2838 Park Ave, Soquel, CA 95073

CAPITOLA CORPORATION YARD
430 KENNEDY DR
CAPITOLA CA 95010

Alpha Machine Company
933 CHITTENDEN LN STE A
CAPITOLA CA 95010

Arctic Glacier
310 KENNEDY ST
CAPITOLA CA 95010

CITY OF CAPITOLA CORPORATION YARD
430 KENNEDY DR
CAPITOLA CA 95010

Sante Adairius LLC
103 KENNEDY DR
CAPITOLA CA 95010

AT&T Mobility - HWY 1 - DUCATTI MOTORS (USID24222)
200 KENNEDY DR
CAPITOLA CA 95010

CENTRAL FIRE PROTECTION DISTRICT-KENNEDY
410 KENNEDY DR
CAPITOLA CA 95010

- PROFILE
- MAP
- REGULATORY PROGRAMS
- COMPLIANCE
- CHEMICALS**

< SHOW LESS INFORMATION

Chemical Storage

REPORTING PERIOD: 2020
SUBMITTED ON: 12/07/2020

Chemicals

Name	Max Daily Amount / Unit	Avg Daily Amount / Unit	Days Onsite	Physical State(S)	
+					
+	WASTE OIL FILTERS	100-499 Pounds	0-99 Pounds	365	Solid
+	USED OIL	120-599 Gallons	60-119 Gallons	365	Liquid
+	Propane	0-11 Gallons	0-11 Gallons	0	Gas, Pure
+	Oxygen	0-2599 Cubic Feet	0-2599 Cubic Feet	365	Gas, Pure
+	MOTOR OIL	120-599 Gallons	120-599 Gallons	365	Liquid, Mix

5 rows

Page: 1 of 2

1 - 5 of 10

Home
Layers
Download
Print
Info
Fullscreen

2838 Park Ave, Soquel, CA 95073

10 sites found

Did you mean: 📍 2838 Park Ave, Soquel, CA 95073

CAPITOLA CORPORATION YARD
430 KENNEDY DR
CAPITOLA CA 95010

Alpha Machine Company
933 CHITTENDEN LN STE A
CAPITOLA CA 95010

Arctic Glacier
310 KENNEDY ST
CAPITOLA CA 95010

CITY OF CAPITOLA CORPORATION YARD
430 KENNEDY DR
CAPITOLA CA 95010

Sante Adairius LLC
103 KENNEDY DR
CAPITOLA CA 95010

AT&T Mobility - HWY 1 - DUCATTI MOTORS (USID24222)
200 KENNEDY DR
CAPITOLA CA 95010

EARTHWORKS PAVING CONTRACTORS INC ✕
310 KENNEDY DR #A
CAPITOLA CA 95010

[SHOW MORE INFORMATION >](#)

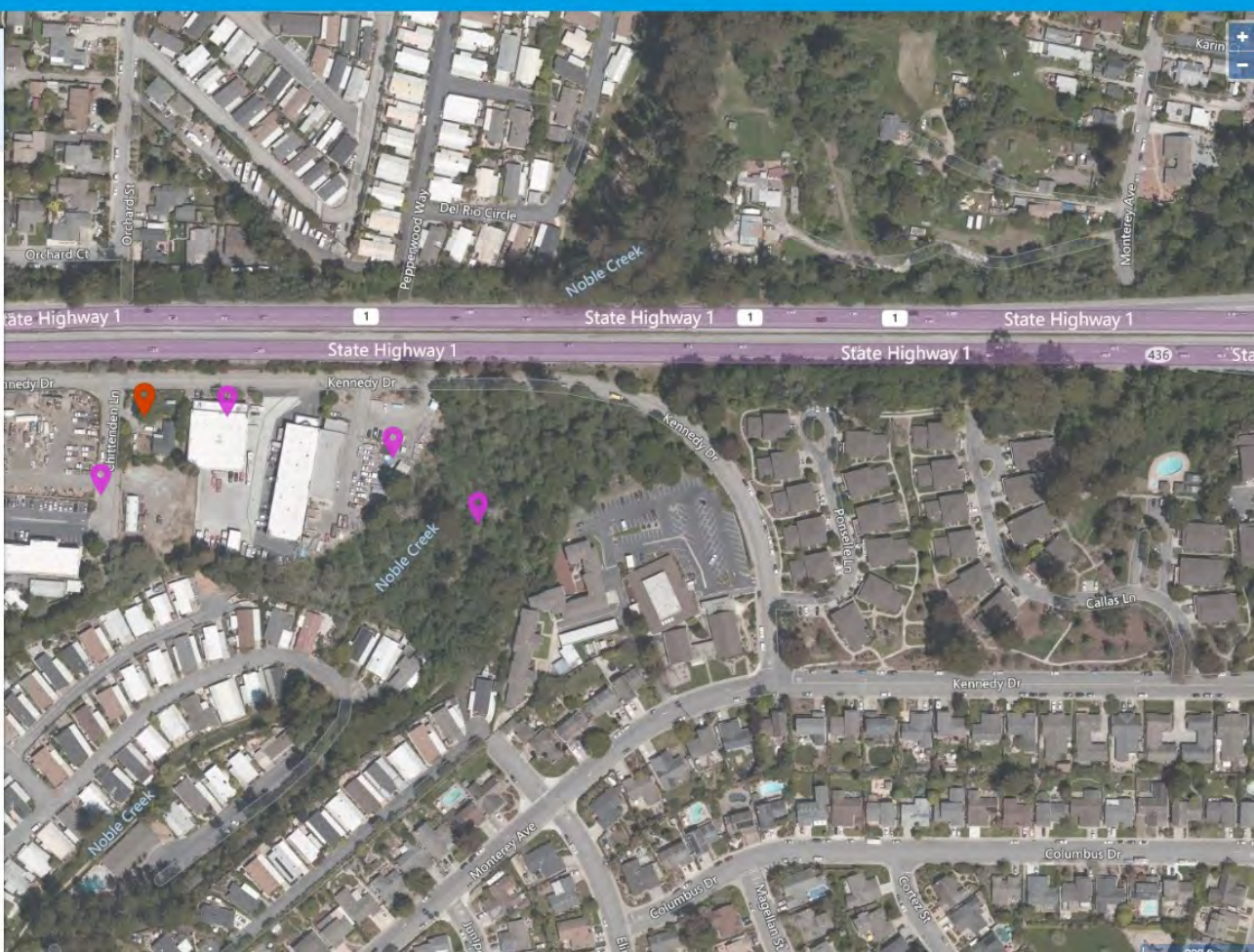
State Highway 1

Regulatory Programs
Chemical Storage Facilities
Hazardous Waste Generator

Evaluations
Evaluations With Violations: 4
Evaluations Without Violations: 4

Violations
Total: 5

Compliance
Total: 3





Ruler

Line Path Polygon Circle 3D path 3D polygon

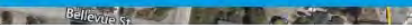
Measure the distance between two points on the ground

Map Length:	3,754.63	Feet
Ground Length:	3,754.65	
Heading:	255.89	degrees

Mouse Navigation Save Clear

310 Kennedy Dr

Google Earth



Home, Search, Print, Download, List, Info, Refresh icons

2838 Park Ave, Soquel, CA 95073

10 sites found

Did you mean: 2838 Park Ave, Soquel, CA 95073

CAPITOLA CORPORATION YARD
430 KENNEDY DR
CAPITOLA CA 95010

Alpha Machine Company
933 CHITTENDEN LN STE A
CAPITOLA CA 95010

Arctic Glacier
310 KENNEDY ST
CAPITOLA CA 95010

CITY OF CAPITOLA CORPORATION YARD
430 KENNEDY DR
CAPITOLA CA 95010

Sante Adairius LLC
103 KENNEDY DR
CAPITOLA CA 95010

AT&T Mobility - HWY 1 - DUCATTI MOTORS (USID24222)
200 KENNEDY DR
CAPITOLA CA 95010

EARTHWORKS PAVING CONTRACTORS INC
310 KENNEDY DR #A
CAPITOLA CA 95010

- PROFILE
- MAP
- REGULATORY PROGRAMS
- COMPLIANCE
- CHEMICALS**

< SHOW LESS INFORMATION

Chemical Storage

REPORTING PERIOD: 2020
SUBMITTED ON: 04/13/2020

Chemicals

Name	Max Daily Amount / Unit	Avg Daily Amount / Unit	Days Onsite	Physical State(S)	
+					
+	ARGON	0-2599 Cubic Feet	0-2599 Cubic Feet	365	Gas, Pure
+	ACETYLENE	0-2599 Cubic Feet	0-2599 Cubic Feet	365	Gas, Pure

5 rows

Page: 2 of 2

6 - 7 of 7



Home, Search, Download, Print, Info, Close icons

2838 Park Ave, Soquel, CA 95073

10 sites found

Did you mean: 2838 Park Ave, Soquel, CA 95073

CAPITOLA CORPORATION YARD
430 KENNEDY DR
CAPITOLA CA 95010

Alpha Machine Company
933 CHITTENDEN LN STE A
CAPITOLA CA 95010

Arctic Glacier
310 KENNEDY ST
CAPITOLA CA 95010

CITY OF CAPITOLA CORPORATION YARD
430 KENNEDY DR
CAPITOLA CA 95010

Sante Adairius LLC
103 KENNEDY DR
CAPITOLA CA 95010

AT&T Mobility - HWY 1 - DUCATTI MOTORS (USID24222)
200 KENNEDY DR
CAPITOLA CA 95010

EARTHWORKS PAVING CONTRACTORS INC
310 KENNEDY DR #A
CAPITOLA CA 95010

- PROFILE
- MAP
- REGULATORY PROGRAMS
- COMPLIANCE
- CHEMICALS**

[SHOW LESS INFORMATION](#)

Chemical Storage

REPORTING PERIOD: 2020
SUBMITTED ON: 04/13/2020

Chemicals

Name	Max Daily Amount / Unit	Avg Daily Amount / Unit	Days Onsite	Physical State(S)	
+					
+	USED OIL	60-119 Gallons	12-59 Gallons	365	Liquid
+	PROPANE	0-2599 Cubic Feet	0-2599 Cubic Feet	365	Gas, Pure
+	OXYGEN, [COMPRESSED]	0-2599 Cubic Feet	0-2599 Cubic Feet	365	Gas, Pure
+	MOTOR OIL	12-59 Gallons	12-59 Gallons	365	Liquid, Mix
+	ARGON-CARBON DIOXIDE GAS MIXTURE	0-2599 Cubic Feet	0-2599 Cubic Feet	365	Gas, Mix

5 rows

LAKESIDE ORGANIC - COSMES RANCH
 160 LAKEVIEW RD
 WATSONVILLE CA 95076

[SHOW MORE INFORMATION >](#)



Regulatory Programs
 Chemical Storage Facilities

Evaluations
 Evaluations With Violations: 1
 Evaluations Without Violations: 5

Violations
 Total: 1

Compliance
 Total: 1





Ruler

Line Path Polygon Circle 3D path 3D polygon

Measure the distance between two points on the ground

Map Length: 1,015.26 Feet

Ground Length: 1,015.27

Heading: 299.63 degrees

Mouse Navigation Save Clear

Image Landsat / Copernicus

Google Earth

1985

36°50'10.53" N, 121°56'09.21" W, elev. 125 ft eye alt. 4237 ft

2838 Park Ave, Soquel, CA 95073

15 sites found

Did you mean: 2838 Park Ave, Soquel, CA 95073

SOQUEL CREEK WATER DISTRICT
5180 SOQUEL DR
SOQUEL CA 95073

SCWD - TANNERY WELL
5738 1/2 SOQUEL DR
SOQUEL CA 95073

Former Santa Cruz County Public Works Tool Yard
5141-5180 SOQUEL DRIVE
SOQUEL CA 95010

BAY PHOTO INC MAIN LAB
2853 PARK AVE
SOQUEL CA 950730000

PG&E: Soquel Substation
SOQUEL DRIVE
SOQUEL CA 95073

AT&T California - NF117
340 RODRIGUEZ ST
WATSONVILLE CA 95076

LAKESIDE ORGANIC - COSMES RANCH
160 LAKEVIEW RD
WATSONVILLE CA 95076

- PROFILE
- MAP
- REGULATORY PROGRAMS
- COMPLIANCE
- CHEMICALS**

< SHOW LESS INFORMATION

Chemical Storage

REPORTING PERIOD: 2021
SUBMITTED ON: 07/07/2021

Chemicals

Name	Max Daily Amount / Unit	Avg Daily Amount / Unit	Days Onsite	Physical State(S)
+ Diesel Fuel No. 2	120-599 Gallons	120-599 Gallons	365	Liquid, Pure

NEW BRIGHTON STATE BEACH
 1500 PARK AVE
 CAPITOLA CA 95010

[SHOW MORE INFORMATION >](#)

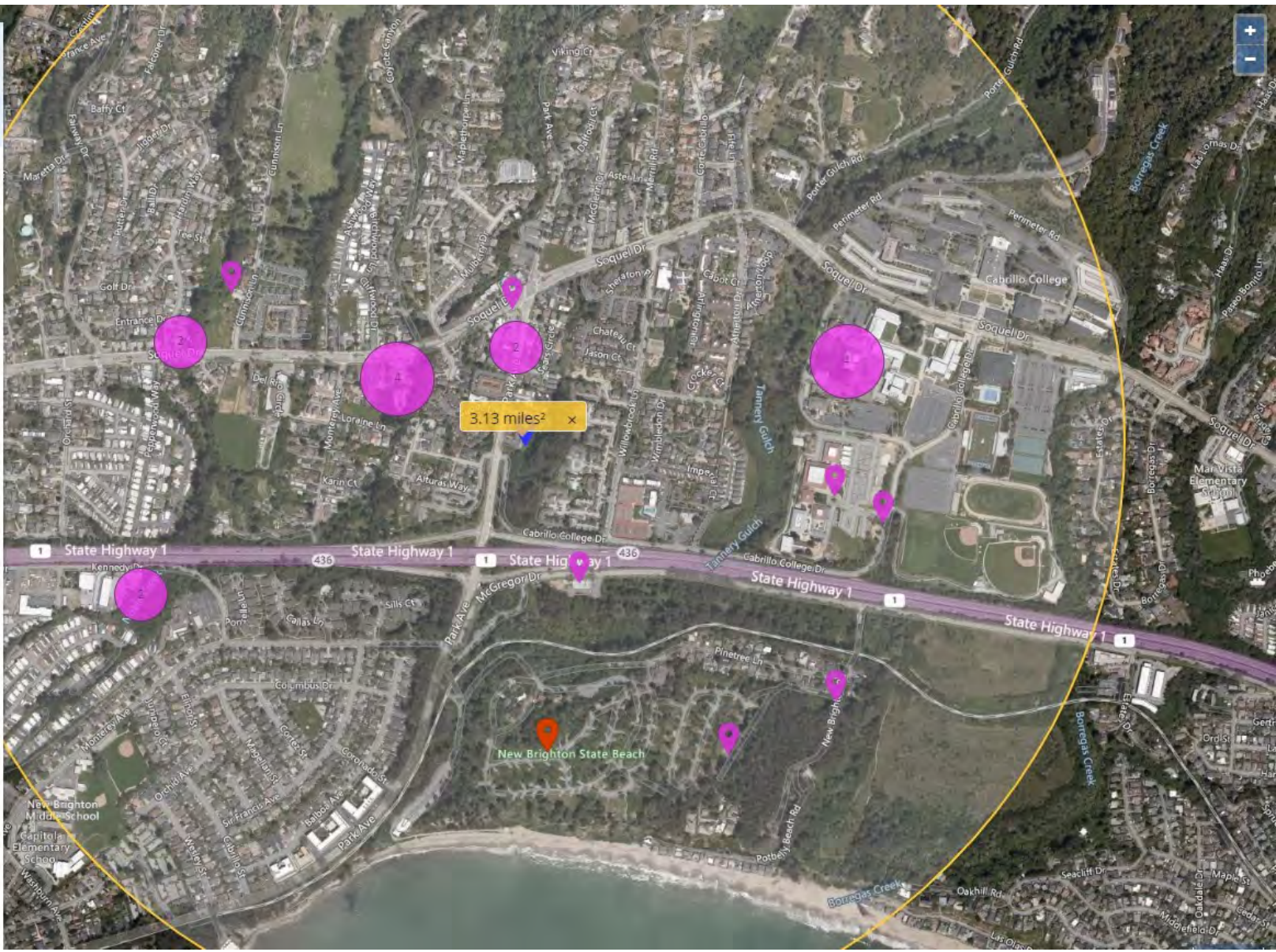


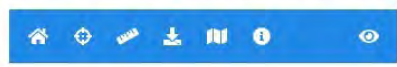
Regulatory Programs

- Chemical Storage Facilities
- Leaking Underground Storage Tank Cleanup Site

Evaluations

Total 4





2838 Park Ave, Soquel, CA 95073

36 sites found

Did you mean: 2838 Park Ave, Soquel, CA 95073

Rite Aid #5965
80 RANCHO DEL MAR
APTOS CA 95003

SCWD - T HOPKINS WELL
201 APTOS CREEK RD
APTOS CA 95003

APTOS INLAND
3200 APTOS RANCHO RD
APTOS CA 95003

SAFEWAY FUEL CENTER #640-12
18 RANCHO DEL MAR
APTOS CA 95003

SHELL STATION
18 RANCHO DEL MAR
APTOS CA 95003

AT&T California - NF1BV
MAR VISTA SCHOOL
APTOS CA 95003

NEW BRIGHTON STATE BEACH
1500 PARK AVE
CAPITOLA CA 95010

PROFILE MAP REGULATORY PROGRAMS COMPLIANCE **CHEMICALS**

< SHOW LESS INFORMATION

Chemical Storage

REPORTING PERIOD: 2020
SUBMITTED ON: 04/22/2020

Chemicals

Name	Max Daily Amount / Unit	Avg Daily Amount / Unit	Days Onsite	Physical State(S)
Oxygen	0-2599 Cubic Feet	0-2599 Cubic Feet	365	Gas, Pure
ARGON-CARBON DIOXIDE GAS MIXTURE	0-2599 Cubic Feet	0-2599 Cubic Feet	365	Gas, Mix
ACETYLENE	0-2599 Cubic Feet	0-2599 Cubic Feet	365	Gas, Pure

2838 Park Ave, Soquel, CA 95073

5 sites found

Did you mean: 2838 Park Ave, Soquel, CA 95073

SOQUEL CREEK WATER DISTRICT
5180 SOQUEL DR
SOQUEL CA 95073

PG&E: Soquel Substation
SOQUEL DRIVE
SOQUEL CA 95073

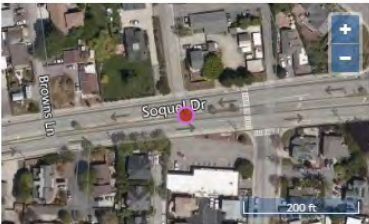
QUIK STOP MARKET NO 78
5505 SOQUEL DR
SOQUEL CA 95073

QUIK STOP MARKET #78
5505 SOQUEL DR
SOQUEL CA 95073

The Farm Property
5555 SOQUEL DRIVE
SOQUEL CA 95073

PG&E: Soquel Substation
SOQUEL DRIVE
SOQUEL CA 95073

[SHOW MORE INFORMATION >](#)



Regulatory Programs

- Chemical Storage Facilities

Evaluations

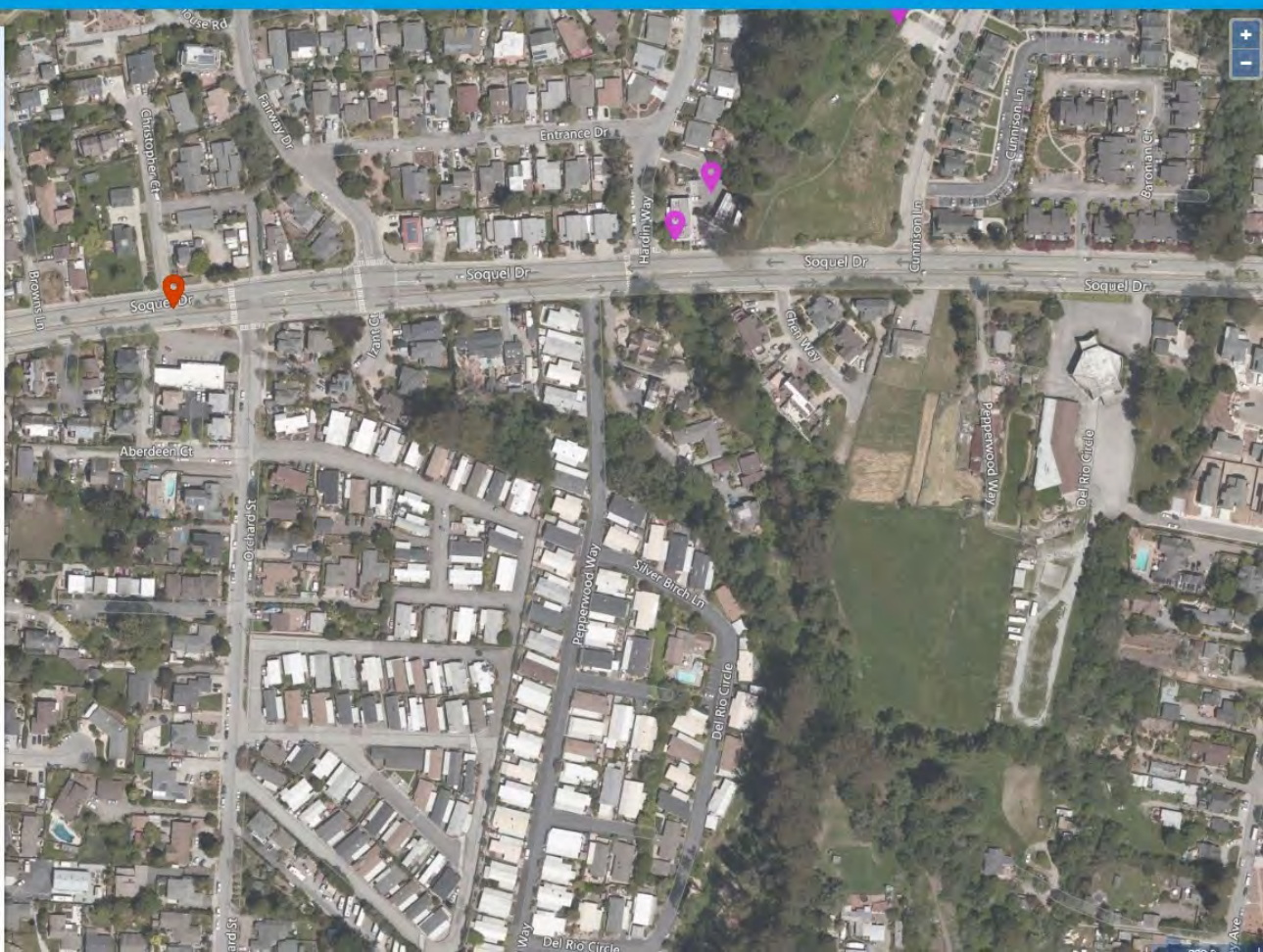
Evaluations With Violations	1
Evaluations Without Violations	5

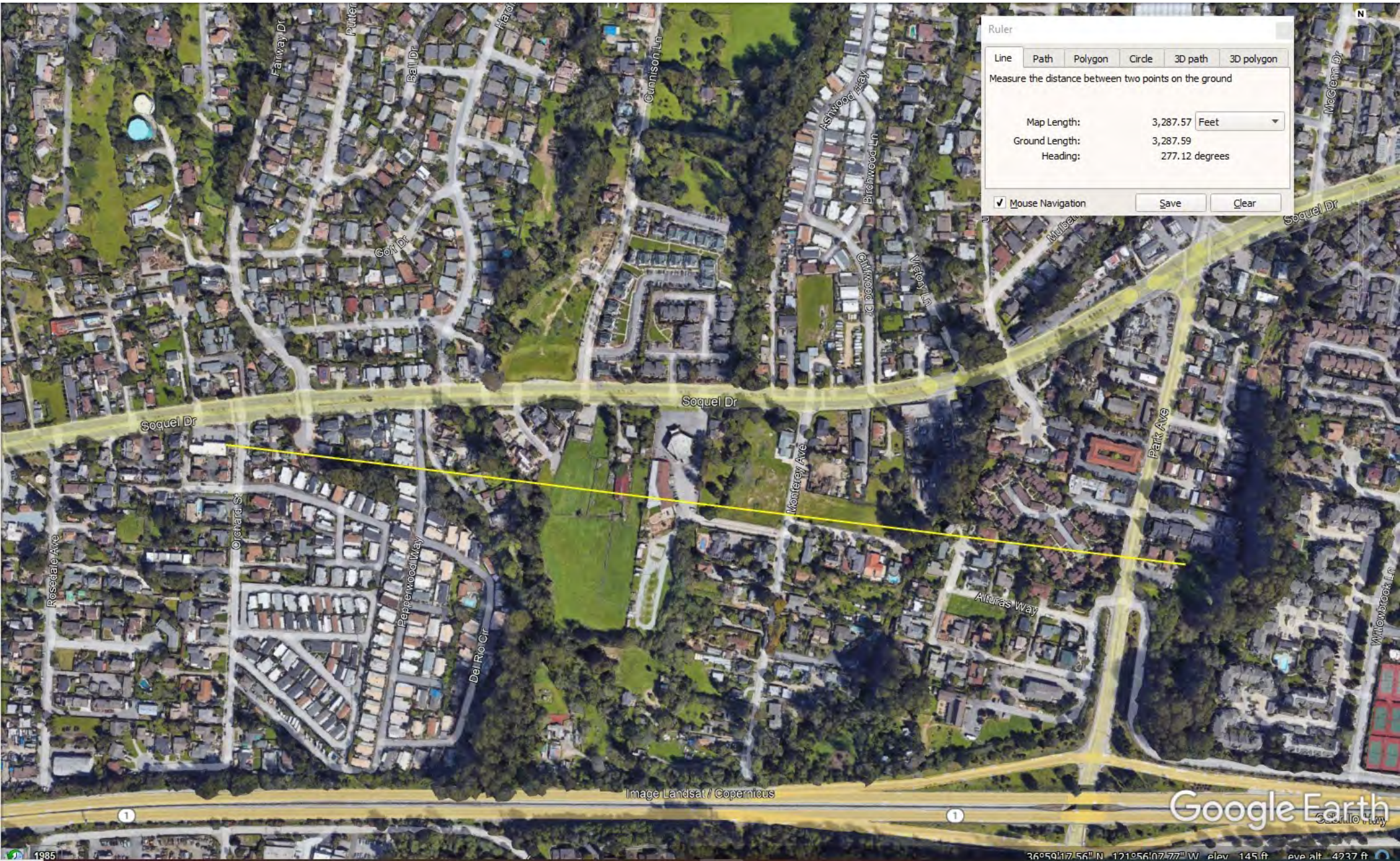
Violations

Total	2
-------	---

Compliance

Total	1
-------	---





Ruler

Line Path Polygon Circle 3D path 3D polygon

Measure the distance between two points on the ground

Map Length: 3,287.57 Feet

Ground Length: 3,287.59

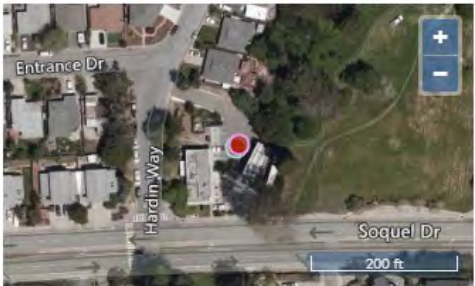
Heading: 277.12 degrees

Mouse Navigation Save Clear

QUIK STOP MARKET #78
5505 SOQUEL DR
SOQUEL CA 95073



[SHOW MORE INFORMATION >](#)



Regulatory Programs

- Chemical Storage Facilities
- Hazardous Waste Generator
- Underground Storage Tank

Evaluations

Evaluations With Violations	9
Evaluations Without Violations	17

Violations

Total	15
-------	----

Compliance

Total	6
-------	---





Ruler

Line Path Polygon Circle 3D path 3D polygon

Measure the distance between two points on the ground

Map Length: 2,537.68 Feet

Ground Length: 2,537.70

Heading: 288.00 degrees

Mouse Navigation

Save Clear

Image Landsat / Copernicus

Google Earth



2838 Park Ave, Soquel, CA 95073

15 sites found

Did you mean: 📍 2838 Park Ave, Soquel, CA 95073

SOQUEL CREEK WATER DISTRICT
5180 SOQUEL DR
SOQUEL CA 95073

SCWD - TANNERY WELL
5738 1/2 SOQUEL DR
SOQUEL CA 95073

Former Santa Cruz County Public Works Tool Yard
5141-5180 SOQUEL DRIVE
SOQUEL CA 95010

BAY PHOTO INC MAIN LAB
2853 PARK AVE
SOQUEL CA 950730000

PG&E: Soquel Substation
SOQUEL DRIVE
SOQUEL CA 95073

AT&T California - NF117
340 RODRIGUEZ ST
WATSONVILLE CA 95076

QUIK STOP MARKET #78
5505 SOQUEL DR
SOQUEL CA 95073

PROFILE MAP REGULATORY PROGRAMS COMPLIANCE CHEMICALS

[SHOW LESS INFORMATION](#)

Chemical Storage

REPORTING PERIOD: 2021
SUBMITTED ON: 07/16/2021

Chemicals

Name	Max Daily Amount / Unit	Avg Daily Amount / Unit	Days Onsite	Physical State(S)	
+					
+	WASTES, GASOLINE CONTAMINATED	12-59 Gallons	12-59 Gallons	365	Liquid
+	WASTES, GASOLINE CONTAMINATED	100-499 Pounds	0-99 Pounds	365	Solid
+	REGULAR UNLEADED GASOLINE	12000-59999 Gallons	6000-8999 Gallons	365	Liquid, Mix
+	PROPANE	2600-12999 Cubic Feet	0-2599 Cubic Feet	365	Gas, Pure
+	PREMIUM UNLEADED GASOLINE	12000-59999 Gallons	6000-8999 Gallons	365	Liquid, Mix

5 rows

Page: 1 of 2

1 - 5 of 6

SCWD - TANNERY WELL
5738 1/2 SOQUEL DR
SOQUEL CA 95073



[SHOW MORE INFORMATION >](#)



Regulatory Programs
Chemical Storage Facilities

Evaluations
Total 6



2838 Park Ave, Soquel, CA 95073

9 sites found

Did you mean: 2838 Park Ave, Soquel, CA 95073

SCWD - TANNERY WELL
 5738 1/2 SOQUEL DR
 SOQUEL CA 95073

BAY PHOTO INC MAIN LAB
 2853 PARK AVE
 SOQUEL CA 950730000

AT&T California - NF117
 340 RODRIGUEZ ST
 WATSONVILLE CA 95076

David Bruce Winery
 21439 BEAR CREEK RD
 LOS GATOS CA 95033

LAKESIDE ORGANIC - COSMES RANCH
 160 LAKEVIEW RD
 WATSONVILLE CA 95076

Bay Photo Lab
 2959 PARK AVE STE A
 SOQUEL CA 95073

SCWD - TANNERY WELL
 5738 1/2 SOQUEL DR
 SOQUEL CA 95073

- PROFILE
- MAP
- REGULATORY PROGRAMS
- COMPLIANCE
- CHEMICALS**

< SHOW LESS INFORMATION

Chemical Storage

REPORTING PERIOD: 2021
 SUBMITTED ON: 06/03/2021

Chemicals

Name	Max Daily Amount / Unit	Avg Daily Amount / Unit	Days Onsite	Physical State(S)
SODIUM HYPOCHLORITE SOLUTION	120-599 Gallons	120-599 Gallons	365	Liquid, Mix
DIESEL	120-599 Gallons	120-599 Gallons	365	Liquid, Mix



2838 Park Ave, Soquel, CA 95073

15 sites found

Did you mean: 2838 Park Ave, Soquel, CA 95073

SOQUEL CREEK WATER DISTRICT
5180 SOQUEL DR
SOQUEL CA 95073

SCWD - TANNERY WELL
5738 1/2 SOQUEL DR
SOQUEL CA 95073

Former Santa Cruz County Public Works Tool Yard
5141-5180 SOQUEL DRIVE
SOQUEL CA 95010

BAY PHOTO INC MAIN LAB
2853 PARK AVE
SOQUEL CA 950730000

PG&E: Soquel Substation
SOQUEL DRIVE
SOQUEL CA 95073

AT&T California - NF117
340 RODRIGUEZ ST
WATSONVILLE CA 95076

SOQUEL CREEK WATER DISTRICT
5180 SOQUEL DR
SOQUEL CA 95073

PROFILE MAP REGULATORY PROGRAMS COMPLIANCE **CHEMICALS**

[SHOW LESS INFORMATION](#)

Chemical Storage

REPORTING PERIOD: 2021 SUBMITTED ON: 06/03/2021

Chemicals

Name	Max Daily Amount / Unit	Avg Daily Amount / Unit	Days Onsite	Physical State(S)
OXYGEN, compressed	0-2599 Cubic Feet	0-2599 Cubic Feet	365	Gas, Pure
MOTOR OIL	60-119 Gallons	60-119 Gallons	365	Liquid, Mix
Ferric Chloride	60-119 Gallons	12-59 Gallons	270	Liquid, Mix
Diesel Fuel No. 2	600-1199 Gallons	120-599 Gallons	350	Liquid, Pure
Diesel Fuel No. 2	600-1199 Gallons	600-1199 Gallons	365	Liquid, Mix

5 rows

Page: 2 of 3

6 - 10 of 15

SOQUEL CREEK WATER DISTRICT
 5180 SOQUEL DR
 SOQUEL CA 95073

15 sites found

Did you mean: 2838 Park Ave, Soquel, CA 95073

SOQUEL CREEK WATER DISTRICT
 5180 SOQUEL DR
 SOQUEL CA 95073

SCWD - TANNERY WELL
 5738 1/2 SOQUEL DR
 SOQUEL CA 95073

Former Santa Cruz County Public Works Tool Yard
 5141-5180 SOQUEL DRIVE
 SOQUEL CA 95010

BAY PHOTO INC MAIN LAB
 2853 PARK AVE
 SOQUEL CA 950730000

PG&E: Soquel Substation
 SOQUEL DRIVE
 SOQUEL CA 95073

AT&T California - NF117
 340 RODRIGUEZ ST
 WATSONVILLE CA 95076

Chemical Storage

REPORTING PERIOD: 2021
 SUBMITTED ON: 06/03/2021

Chemicals

Name	Max Daily Amount / Unit	Avg Daily Amount / Unit	Days Onsite	Physical State(S)	
+					
+	Diesel Fuel No. 2	120-599 Gallons	0-11 Gallons	353	Liquid, Pure
+	DIESEL FUEL No. 2	120-599 Gallons	120-599 Gallons	365	Liquid, Pure
+	CALCIUM THIOSULFATE	12-59 Gallons	12-59 Gallons	365	Liquid, Mix
+	ARGON/CARBON DIOXIDE	100-499 Pounds	100-499 Pounds	365	Gas, Mix
+	ACETYLENE	0-2599 Cubic Feet	0-2599 Cubic Feet	365	Gas, Pure

5 rows

Home, Search, Download, Print, Info, Close icons

2838 Park Ave, Soquel, CA 95073

15 sites found

Did you mean: 2838 Park Ave, Soquel, CA 95073

SOQUEL CREEK WATER DISTRICT
5180 SOQUEL DR
SOQUEL CA 95073

SCWD - TANNERY WELL
5738 1/2 SOQUEL DR
SOQUEL CA 95073

Former Santa Cruz County Public Works Tool Yard
5141-5180 SOQUEL DRIVE
SOQUEL CA 95010

BAY PHOTO INC MAIN LAB
2853 PARK AVE
SOQUEL CA 950730000

PG&E: Soquel Substation
SOQUEL DRIVE
SOQUEL CA 95073

AT&T California - NF117
340 RODRIGUEZ ST
WATSONVILLE CA 95076

SOQUEL CREEK WATER DISTRICT
5180 SOQUEL DR
SOQUEL CA 95073

PROFILE MAP REGULATORY PROGRAMS COMPLIANCE **CHEMICALS**

[SHOW LESS INFORMATION](#)

Chemical Storage

REPORTING PERIOD: 2021
SUBMITTED ON: 06/03/2021

Chemicals

Name	Max Daily Amount / Unit	Avg Daily Amount / Unit	Days Onsite	Physical State(S)
USED OIL	12-59 Gallons	12-59 Gallons	365	Liquid
UNLEADED GASOLINE	1200-2999 Gallons	1200-2999 Gallons	365	Liquid, Mix
SODIUM HYPOCHLORITE SOLUTION	120-599 Gallons	120-599 Gallons	365	Liquid, Mix
SODIUM HYPOCHLORITE SOLUTION	1200-2999 Gallons	1200-2999 Gallons	365	Liquid, Mix
Propane	100-499 Pounds	0-99 Pounds	365	Gas, Pure

5 rows

Page: 1 of 3

1 - 5 of 15



Ruler

Line Path Polygon Circle 3D path 3D polygon

Measure the distance between two points on the ground

Map Length: 4,070.00 Feet

Ground Length: 4,070.03

Heading: 271.88 degrees

Mouse Navigation Save Clear

5180 Soquel Dr


Image Landsat / Copernicus

Google Earth

36°50'14.43" N, 121°56'37.00" W, elev: 105 ft eye alt: 4592 ft

TWIN LAKES BAPTIST CHURCH INC
 2701 CABRILLO COLLEGE DR
 APTOS CA 95003

[SHOW MORE INFORMATION >](#)



Regulatory Programs

- Chemical Storage Facilities
- Hazardous Waste Generator

Evaluations

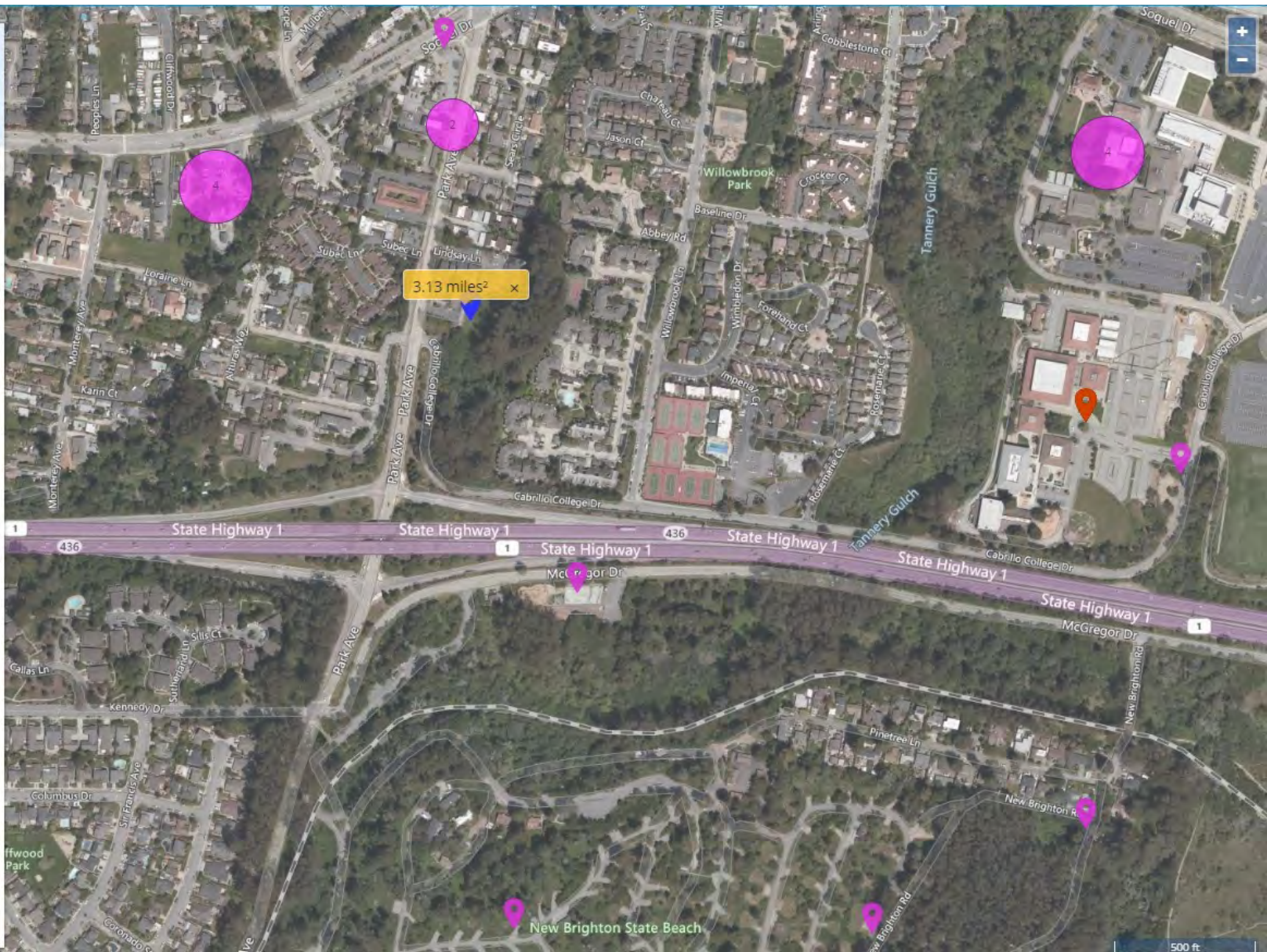
Evaluations With Violations	3
Evaluations Without Violations	7

Violations

Total	6
-------	---

Compliance

Total	3
-------	---





2838 Park Ave, Soquel, CA 95073

2 sites found

Did you mean: 2838 Park Ave, Soquel, CA 95073

Twin Lakes Church Seawater Intrusion Prevention/Recharge Pilot Well
2701 CABRILLO COLLEGE
APTOS CA 95003

TWIN LAKES BAPTIST CHURCH INC
2701 CABRILLO COLLEGE DR
APTOS CA 95003

TWIN LAKES BAPTIST CHURCH INC
2701 CABRILLO COLLEGE DR
APTOS CA 95003

PROFILE MAP REGULATORY PROGRAMS COMPLIANCE CHEMICALS

< SHOW LESS INFORMATION

Chemical Storage

REPORTING PERIOD 2021 SUBMITTED ON 10/07/2021

Chemicals

Name	Max Daily Amount / Unit	Avg Daily Amount / Unit	Days Onsite	Physical State(S)
envirox	12-59 Gallons	12-59 Gallons	365	Liquid
Argon, mixt. with carbon dioxide	0-2599 Cubic Feet	0-2599 Cubic Feet	365	Gas, Mix
Argon Compressed	0-2599 Cubic Feet	0-2599 Cubic Feet	365	Gas, Pure
Acetylene	0-2599 Cubic Feet	0-2599 Cubic Feet	365	Gas, Pure

5 rows

Page: 2 of 2

6 - 9 of 9



Ruler

Line	Path	Polygon	Circle	3D path	3D polygon
Measure the distance between two points on the ground					
Map Length:	1,824.75	Feet			
Ground Length:	1,824.98				
Heading:	112.11	degrees			

Mouse Navigation

Save Clear

Image Landsat / Copernicus

Google Earth

Verizon Wireless Aptos
6500 SOQUEL DR
APTOS CA 95003

SHOW MORE INFORMATION >



Regulatory Programs

Chemical Storage Facilities

Evaluations

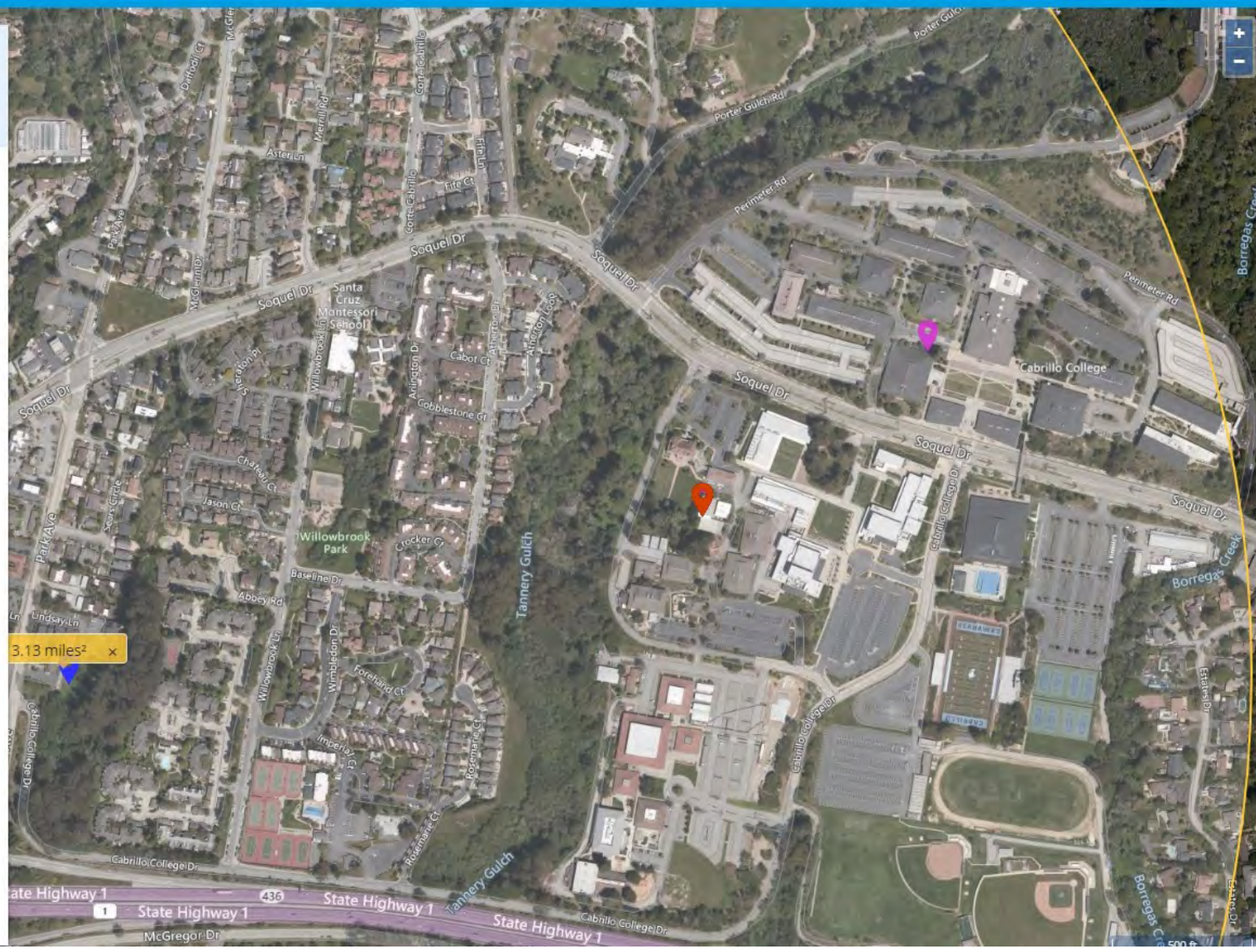
Evaluations With Violations 1
Evaluations Without Violations 4

Violations

Total 1

Compliance

Total 1





2838 Park Ave, Soquel, CA 95073

5 sites found

Did you mean: 📍 2838 Park Ave, Soquel, CA 95073

AT&T Mobility - CABRILLO COLLEGE (CN3767)
(USID102503)
6500 SOQUEL DR
APTOS CA 95003

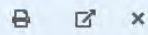
T-Mobile West, LLC SF05739A
6500 SOQUEL DR
APTOS CA 95003

SPRINT CELL SITE FS22XC013
6500 SOQUEL DR
APTOS CA 95003

Verizon Wireless Aptos
6500 SOQUEL DR
APTOS CA 95003

CABRILLO COLLEGE
6500 SOQUEL DR
APTOS CA 95003

Verizon Wireless Aptos
6500 SOQUEL DR
APTOS CA 95003



PROFILE MAP REGULATORY PROGRAMS COMPLIANCE **CHEMICALS**

[< SHOW LESS INFORMATION](#)

Chemical Storage

REPORTING PERIOD: 2021
SUBMITTED ON: 03/29/2021

Chemicals

Name	Max Daily Amount / Unit	Avg Daily Amount / Unit	Days Onsite	Physical State(S)	
+					
+	Electrolyte/sulfuric Acid	60-119 Gallons	60-119 Gallons	365	Liquid, Mix
+	Diesel Fuel No. 2	120-599 Gallons	120-599 Gallons	365	Liquid, Pure



Ruler

Line Path Polygon Circle 3D path 3D polygon

Measure the distance between two points on the ground

Map Length: 2,226.65 Feet

Ground Length: 2,227.40

Heading: 74.29 degrees

Mouse Navigation Save Clear

Image Landsat / Copernicus

Google Earth

4985

36°50'16.66" N, 121°55'41.32" W, elev: 172 ft, eye alt: 2441 ft